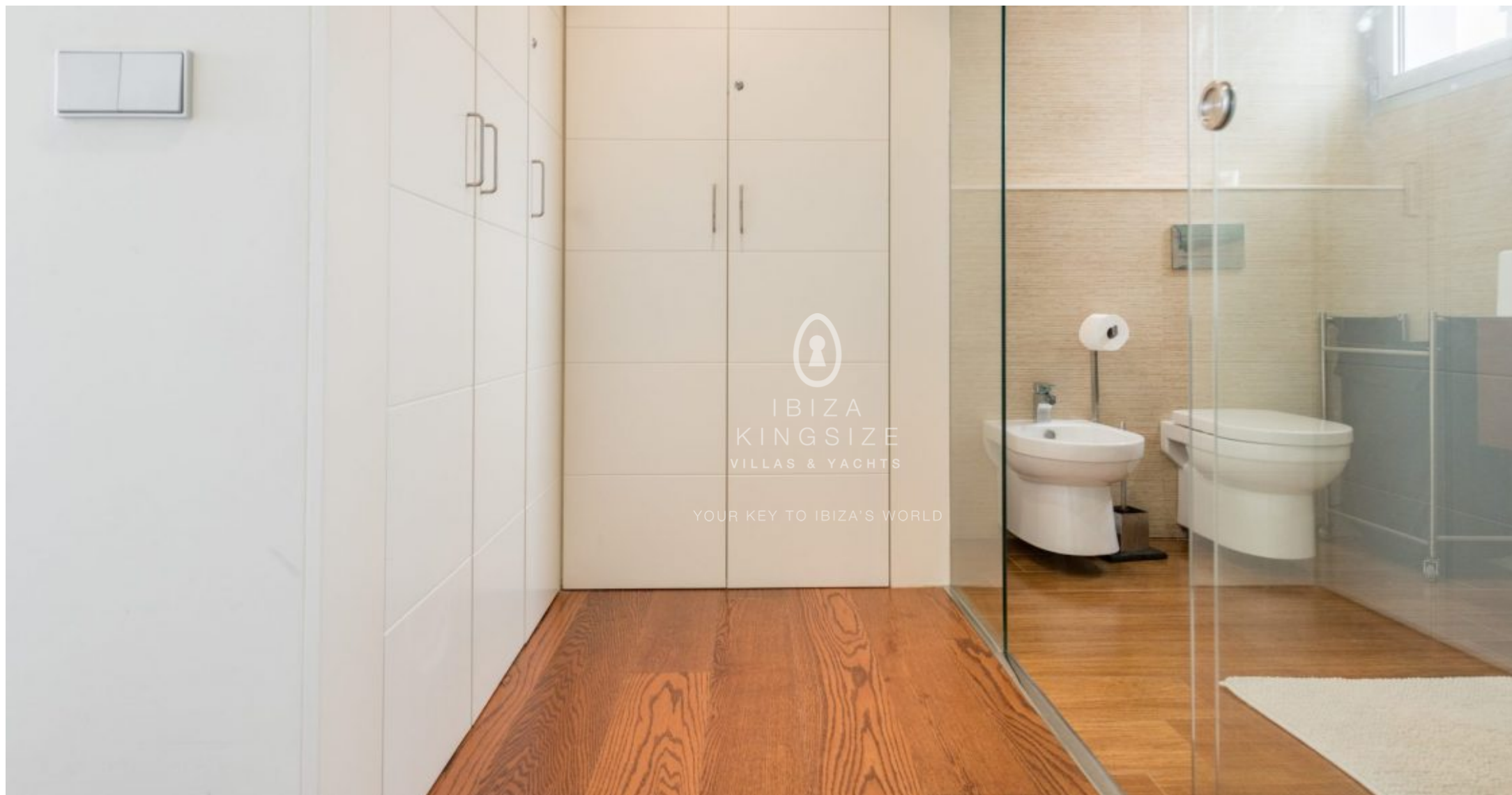






Penthouse Ikebana building at Marina Botafoch

640.000 €
Ref: A1267





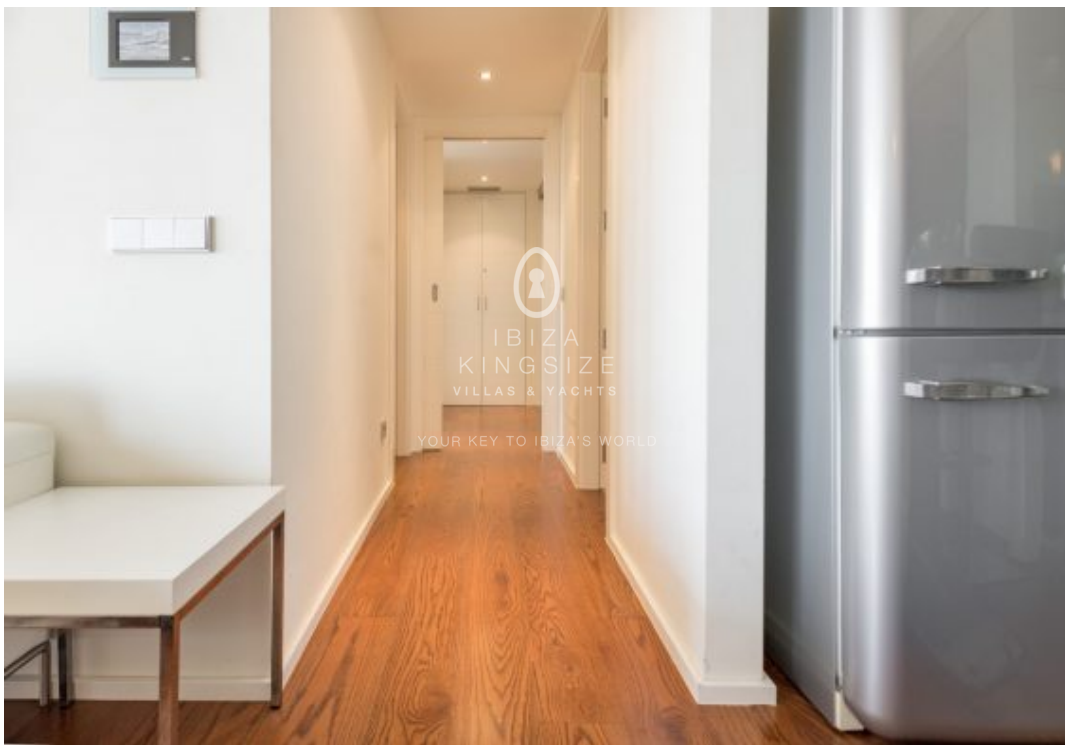
For many, Marina Botafoch is one of the most desirable locations in Ibiza. The beautiful penthouse is located in the high-end entertainment within walking distance of Pacha and Club Heart. Ibiza-town and Talamanca beach is also just few minutes away.

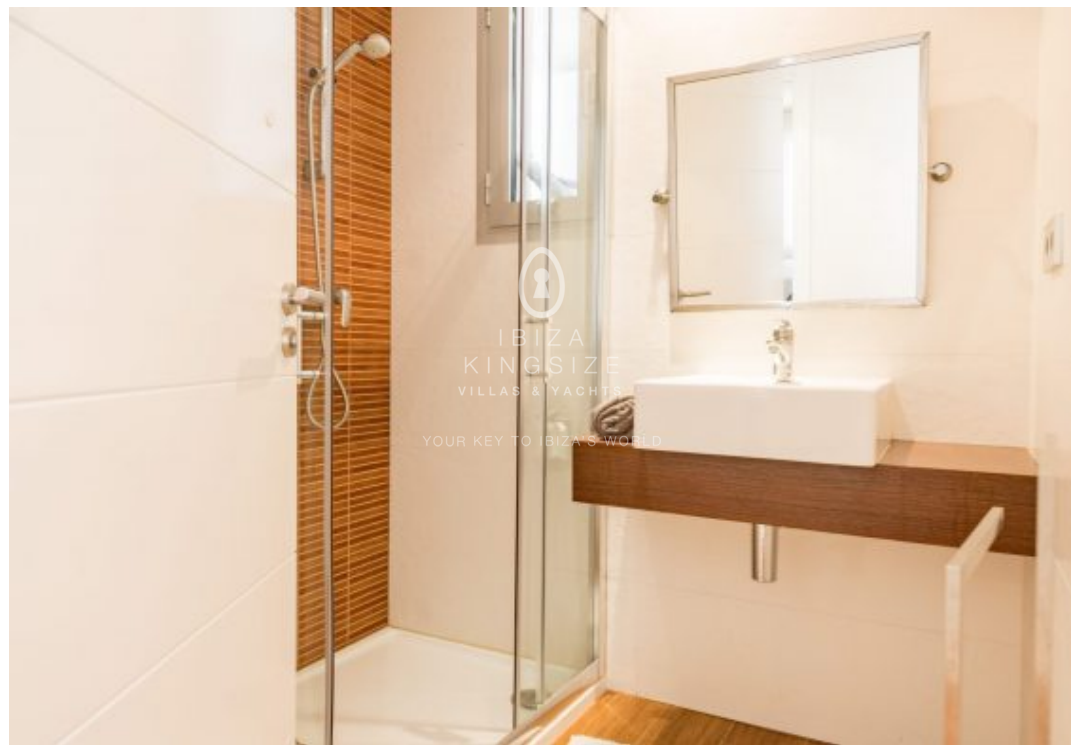
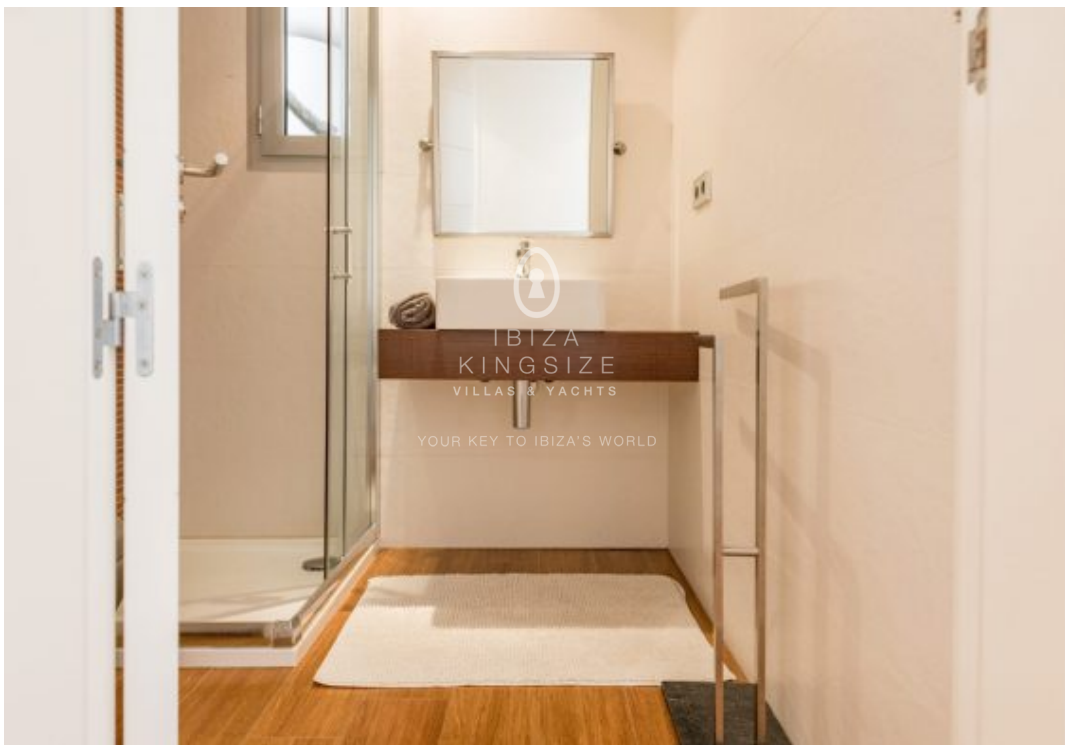
The penthouse is located in the modern Ikebana building, which has been functionally designed and has a high-quality finish. The complex has a concierge service, elevator and a spacious communal pool. There is also a parking space which is part of the sales price.

The residence facilitates an open living room with a sliding door that gives direct access to a covered terrace. From here, you can enter the spacious outdoor area on a higher level. The sun-drenched terrace has a jacuzzi and lounge sofa, with the canopy providing shade. Besides this, the interior of the penthouse has an open kitchen in high-gloss white. It is fully equipped with high-quality equipment. There are also two bedrooms, the master bedroom has an ensuite bathroom. The other bedroom has an ensuite bathroom. The other bedroom can use the shared bathroom.

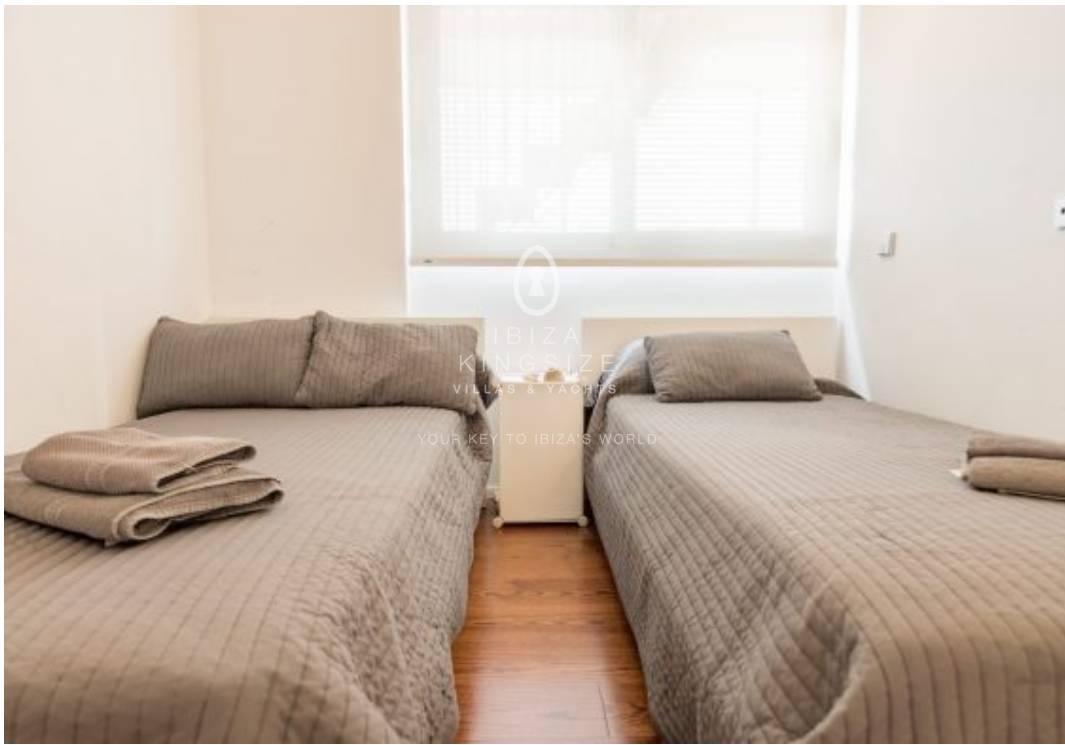
- Ibiza Old Town View
- Concierge
- Wifi
- Ref: A1267
- Energy class: in process
- Sea View
- Outdoor Jacuzzi
- Air Conditioning
- Community Pool
- 24h Security



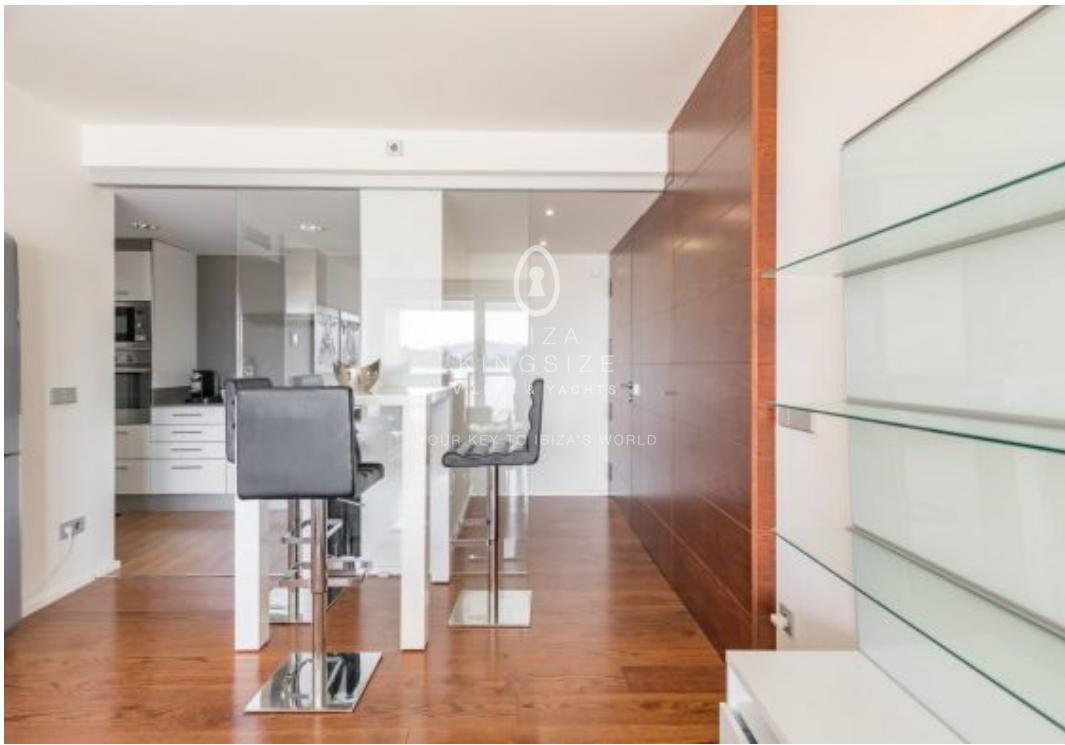
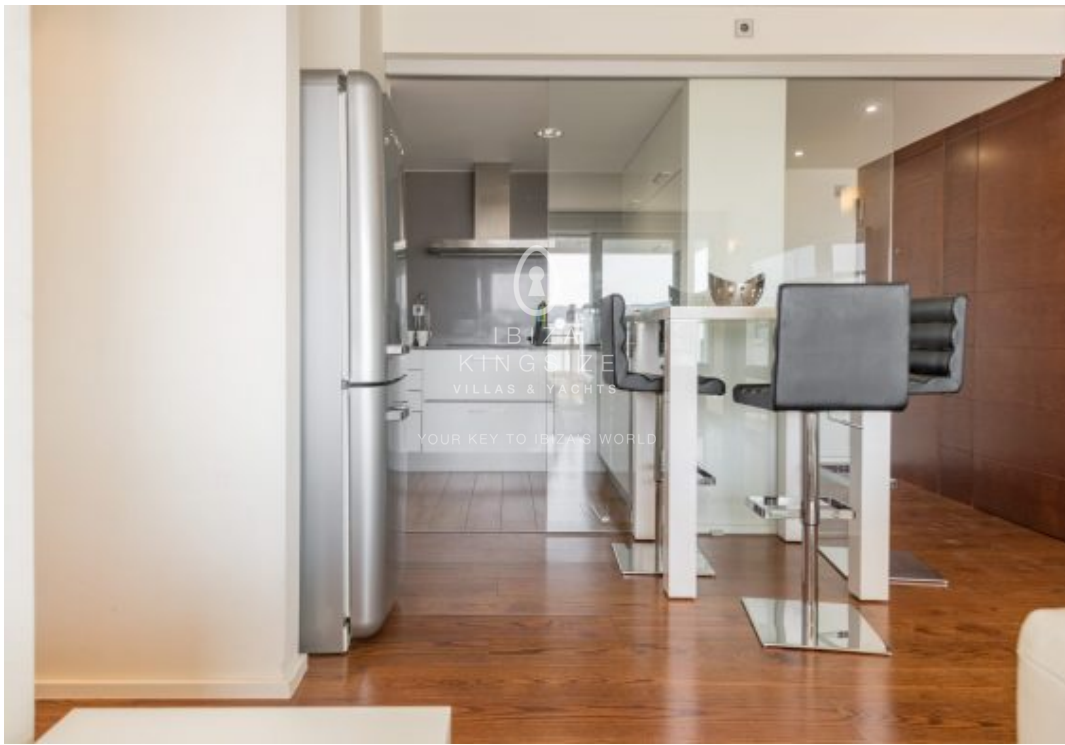






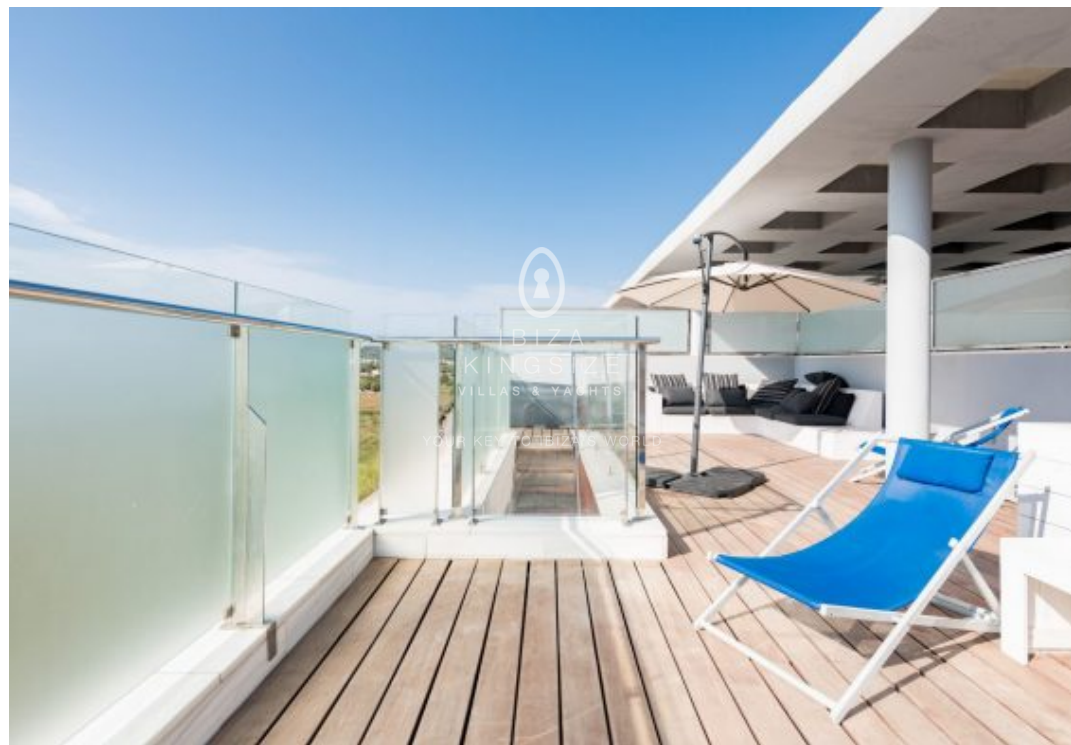


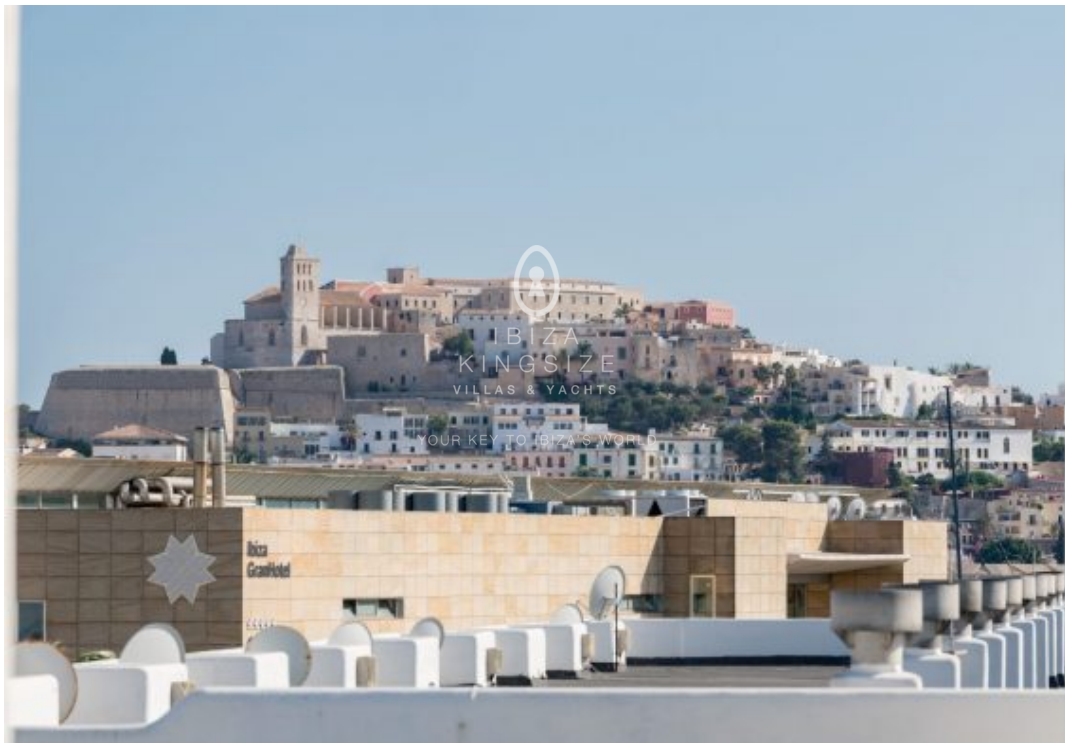
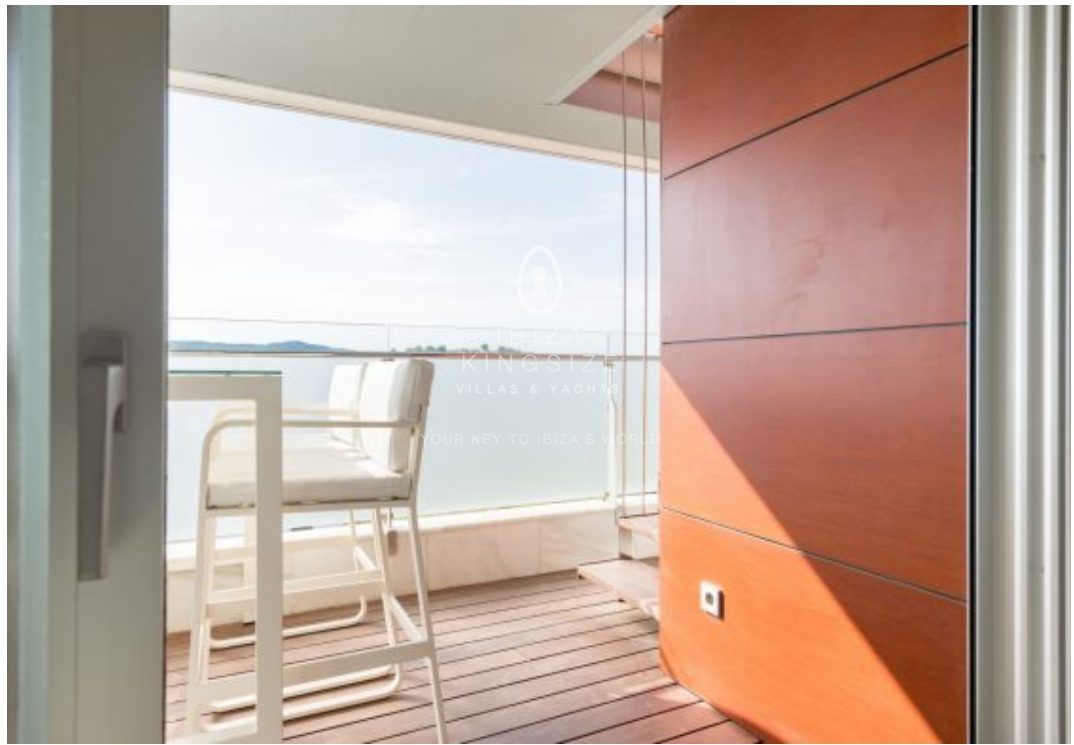






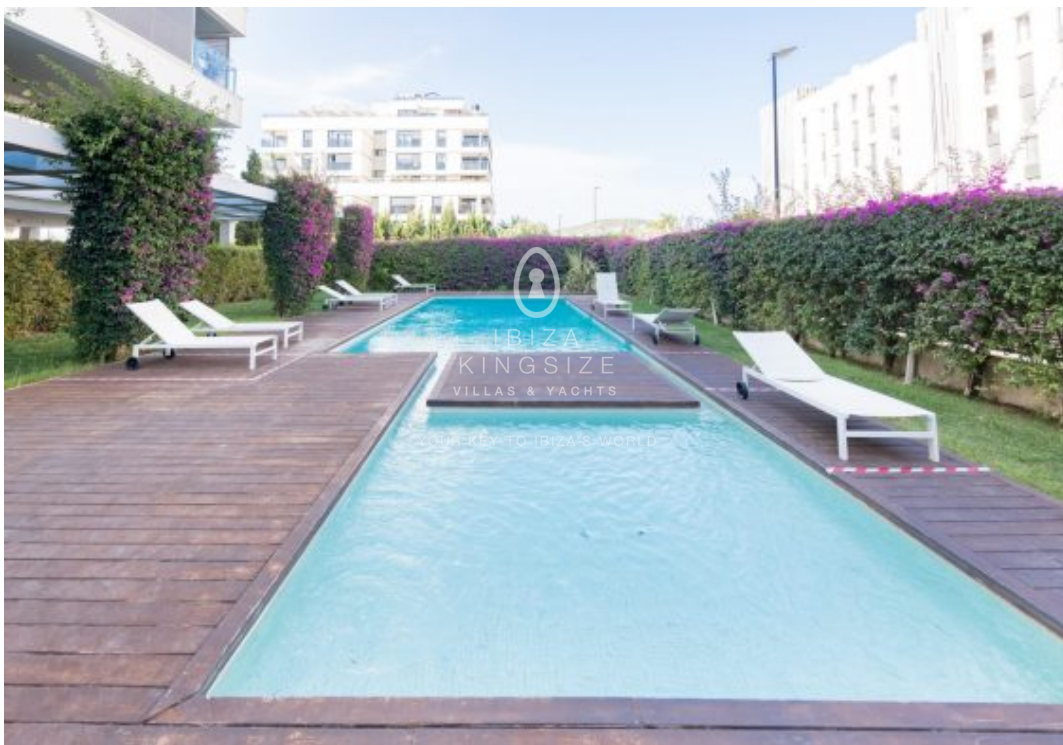
















Your contact person

ALENKA TOPLEK

Ibiza Kingsize Real Estate
Blue Star World S.L.

Phone: +34 871 907 701
Mobile: +49 176 20767676
alenka.toplek@ibiza-kingsize.com

www.ibiza-kingsize.com



IBIZA
KINGSIZE
VILLAS & YACHTS

YOUR KEY TO
IBIZA'S WORLD

info@ibiza-kingsize.com
www.ibiza-kingsize.com